

Series 2293

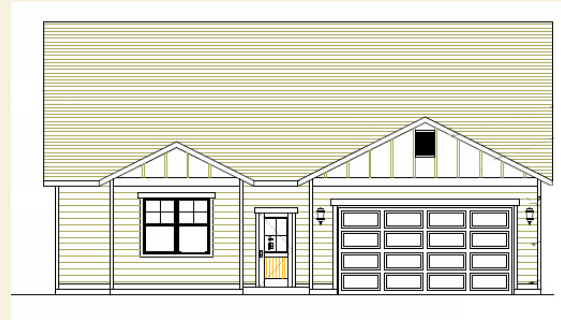
Approx. 2293 sq. ft.

- 3 Bedrooms
- 2 Baths
- Open Island Kitchen/Dining
- Pantry
- Bonus Room/Loft 2nd Floor
- Master Bath w/ Double Sinks

OPTIONS

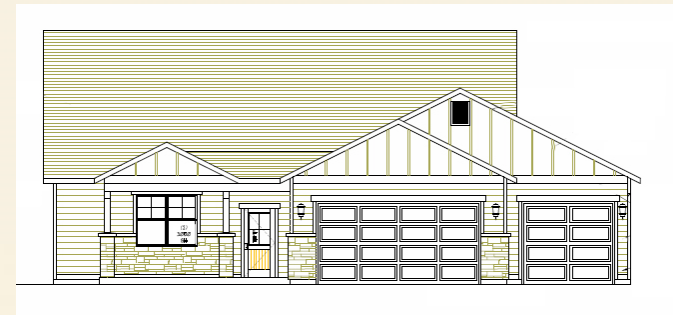
- 4th Bedroom & Full Bath at Loft
- Fireplace at Family Room
- Front Porch & Covered Patio
- 3-Car Garage

Elevation A



Elevation A

(Shown with 3-Car Garage Option)

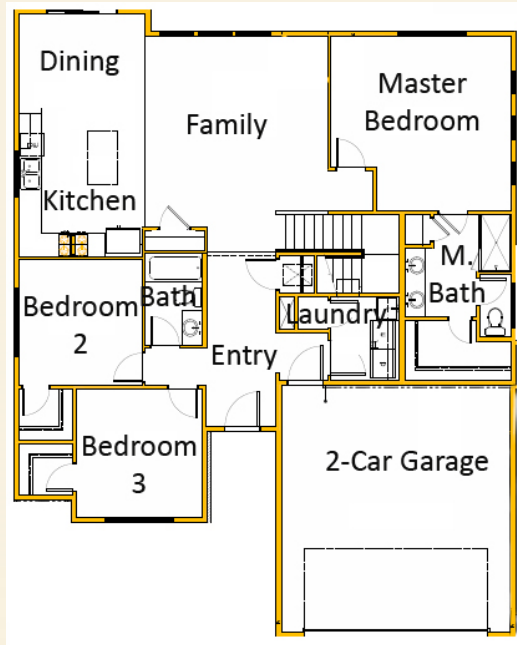


Revised - 09/12 Plans and Specifications: Reported square footage is based upon architectural design, is approximate, and may vary by actual construction and materials may change without notice. Minor changes and substitutions may be made without notification. Floorplans are not to scale and are to be used for marketing purposes only.

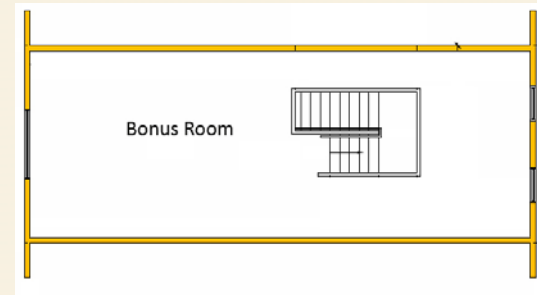
SUNRISE
HOMES
sunrisehomesmt.com

Series 2293

Approx. 2293 sq. ft.



First Floor



Second Floor



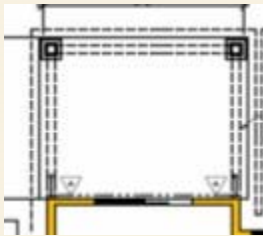
Revised - 09/12 Plans and Specifications: Reported square footage is based upon architectural design, is approximate, and may vary by actual construction and materials may change without notice. Minor changes and substitutions may be made without notification. Floorplans are not to scale and are to be used for marketing purposes only.

SUNRISE
HOMES

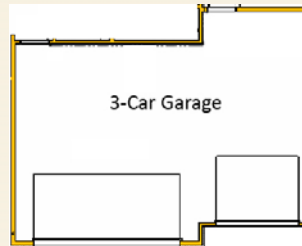
sunrisehomesmt.com

Series 2293 - Options

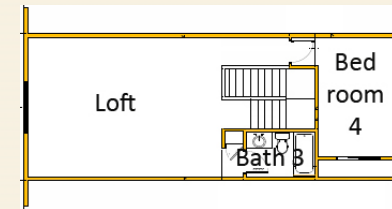
Approx. 2293 sq. ft.



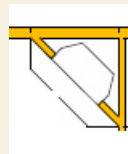
Optional Rear Covered Patio
Off Dining Area



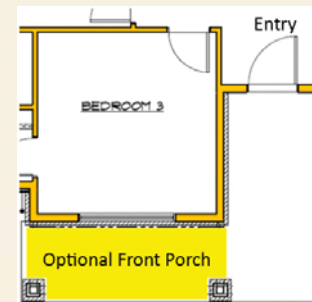
Optional 3-Car Garage



Optional 2nd Floor Bedroom/Bath/Loft



Optional Fireplace at Family Room



Optional Front Porch



Revised - 09/12 Plans and Specifications: Reported square footage is based upon architectural design, is approximate, and may vary by actual construction and materials may change without notice. Minor changes and substitutions may be made without notification. Floorplans are not to scale and are to be used for marketing purposes only.

SUNRISE
HOMES
sunrisehomesmt.com